

Markham Mount



Markham Mount is a stunning development of 18 high quality apartments situated in Pye Nest, Rochdale Road, Halifax.

With magnificent views down the Ryburn Valley and a range of local amenities close by, Markham Mount is very convenient for all types of purchaser.



"APARTMENTS UNLIMITED"

Markham Mount
Rochdale Road
Halifax
HX2 7JT



The Surrounding Area

Markham Mount is a new development situated on the Rochdale Road travelling out of Halifax towards Sowerby Bridge. Crow Wood Park is within a few minutes walk and the traditional facilities of local shops and Post Office are close by. There is a good bus service to both the nearby town centres of Halifax and Sowerby Bridge which both have railway stations, with services to Manchester, Bradford and Leeds.

There is easy access to the M62.

The area is pleasantly residential and is surrounded by beautiful countryside which is attracting ever increasing numbers of tourists year by year.



General Specification:

Each Apartment benefits from the following:

- Lifts to all apartments
- UPVC double glazed external windows and doors
- Gas central heating combination boiler and thermostatic controls to radiators
- Full choice of bathrooms*
- Fitted kitchens with a range of appliances to customers choice*
- Each apartment benefits from a private garage with automated door
- Video entry system to all apartments

* Allowances made within the cost of the apartment. Choice available subject to time scale.

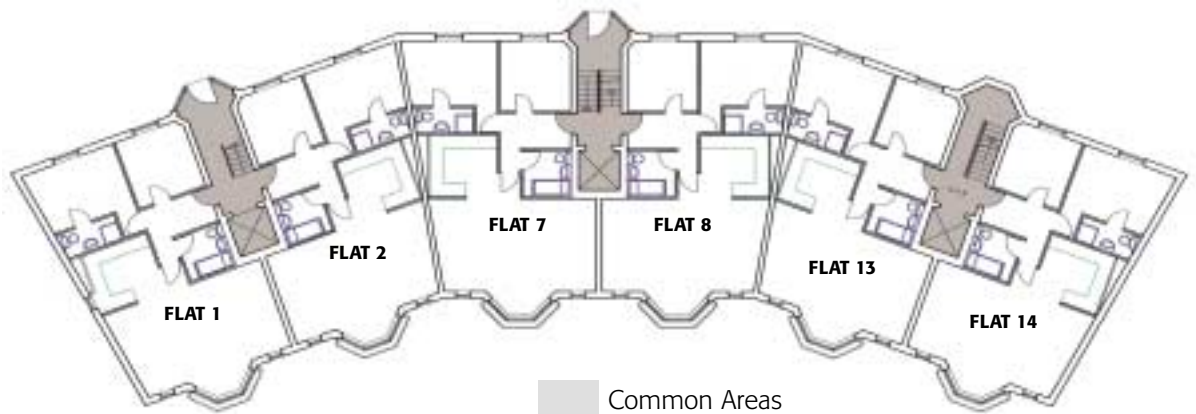
Rochdale Road

Site Plan

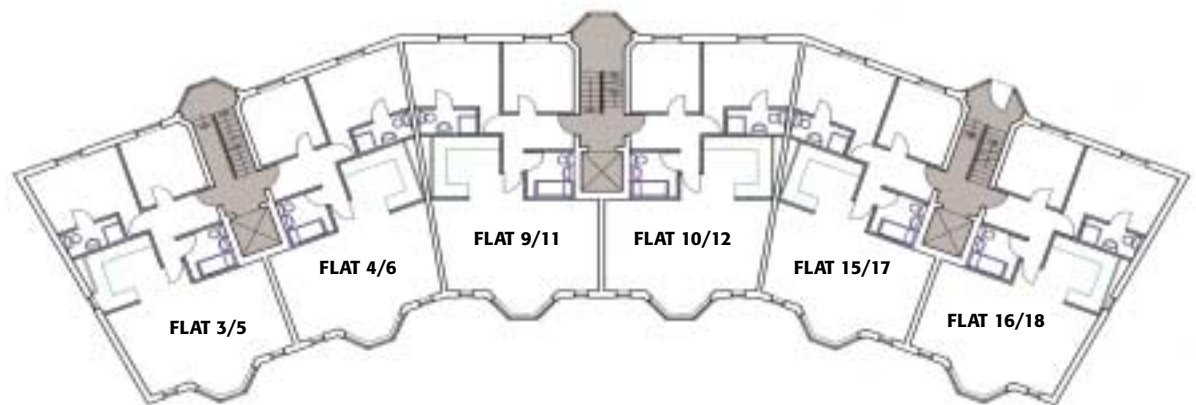
for Markham Mount
18 Apartments with Garaging



Typical Apartment Layout



GROUND FLOOR PLAN



FIRST AND SECOND FLOOR PLANS

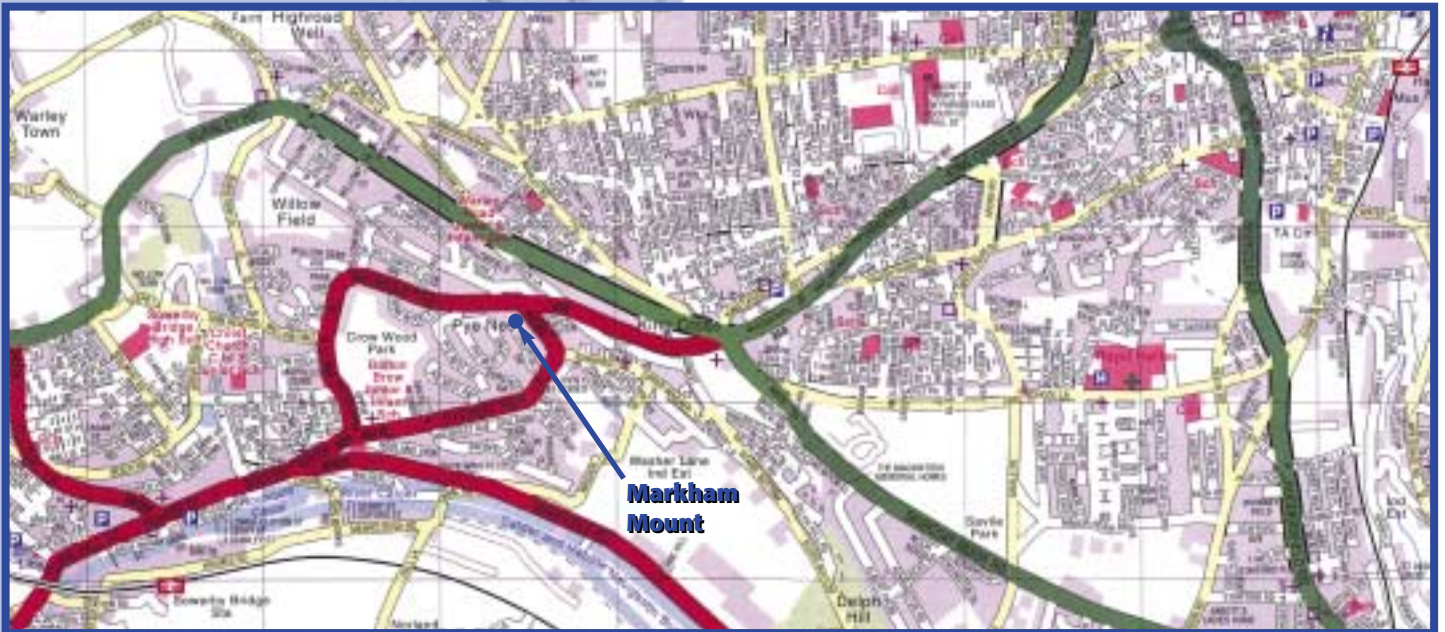
	Metres	Feet
LOUNGE/DINING	6.61 x 4.04	21.96 x 13.26
KITCHEN	2.63 x 2.95	8.63 x 9.67
BATHROOM	2.04 x 1.95	6.68 x 6.40
MASTER BEDROOM	4.23 x 2.83	13.86 x 9.27
EN-SUITE	1.05 x 2.50	3.45 x 8.20
BEDROOM 2	3.07 x 3.05	10.06 x 10.01



View of the Ryburn Valley from Wainhouse Tower

How to find us

From the centre of Halifax take the A58 through King Cross towards Sowerby Bridge. The site is approximately half a mile from the traffic lights at the junction of the A58 with Rochdale Road.



Century Homes

Every care has been taken to ensure the accuracy of the contents of this brochure. However, they cannot be guaranteed or form part of any contract and the developers reserve the right to alter or amend prices, plans, specifications and materials at any time without prior notification.



Hardcastle Crags

Century Homes
Century House
West Parade, Halifax
HX1 2TE

Tel: 01422 350615 Fax: 01422 349454
e-mail: info@century-homes.co.uk
Website: www.century-homes.co.uk